



Works + Sense

Interface®

Works+ Sense

Works+ Sense

Works+是市场最受欢迎的Works系列的升级版。该系列提供了一个完整的解决方案,有更多的颜色搭配和更高的规格。协调的设计也能够应对各种挑战。

受到有机图案的启发, Works+ Sense 创造了更加微妙,视觉效果更柔软的纹理。Works+ Sense 是一款50 x 50厘米的模块地毯,共有9种颜色可供选择。

Works+ Sense 在其整个产品生命周期内都是碳中和的。

Works+ Sense

Works+ is the next generation of the market favourite Works Series. Offering a complete package with more colourways and a superior specification. Co-ordinating designs to solve a wide range of flooring challenges.

Inspired by organic patterns, Works+ Sense creates subtle, visually soft textures. Works+ Sense is a 50 x 50cm square tile, available in 9 colourways.

Works+ Sense is carbon neutral throughout its full lifecycle.







产品/PRODUCT WORKS+ SENSE 颜色/COLOUR EBONY 安装/INSTALLED 左右错拼/BRICK



产品/PRODUCT WORKS+ SENSE 颜色/COLOUR SHELL 安装/INSTALLED 左右错拼/BRICK





4312007 SHELL



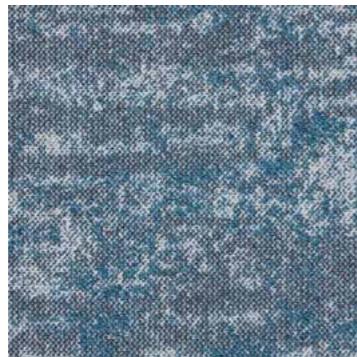
4312001 LAKESIDE



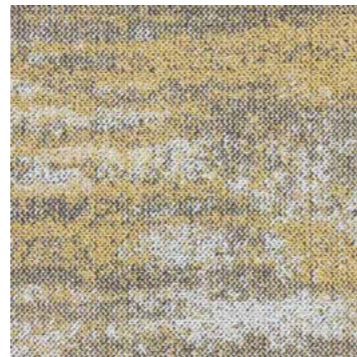
4312002 CACTUS



4312004 HAZE



4312008 ADRIFT



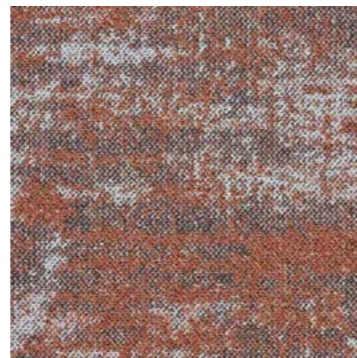
4312003 HONEY



4312009 EBONY

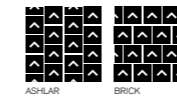


4312006 MINT

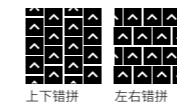


4312005 CANYON

Style Code	4312
Product Construction	Tufted Patterned Structured Loop Pile
Yarn System	100% Solution Dyed Nylon
Machine Gauge	1/10
Pile Thickness	3.3mm (± 0.5mm)
Total Thickness	6.6mm (± 0.5mm)
Tile Size	50x50cm
Area of Use	Commercial - Heavy Use
Lifetime Antimicrobial	Intersept®
Soil/Stain Protection	Protekt2®
Installation Methods	Ashlar, Brick



产品型号	4312
产品结构	簇绒高低圈绒
纱线系统	100%原液染色纱线
簇绒机器规格	1/10
毯毛厚度	3.3mm (± 0.5mm)
总厚度	6.6mm (± 0.5mm)
地毯尺寸	50x50cm
建议使用区域	人流密集区
抗菌类型	Intersept®
抗污类型	Protekt2®
建议安装方式	上下错拼, 左右错拼



Carbon Neutral Floors™



英特飞在亚太地区的所有生产设施都经过ISO 9001质量管理体系和ISO 14001环境管理体系的认证。
All Interface manufacturing facilities in the Asia Pacific region maintain registration to ISO 9001 Quality Management Systems and ISO 14001 Environmental Management Systems.

产品规格可能会受到实际生产公差的影响,且可能会随时更新,恕不另行通知。不同生产批次间的少许色差实属正常,整体安装规划应将其考虑在内。产品质保以生产商提供的书面质保文件为准。免责声明,对于其它保证,包括但不限于对特定用途的适销性、适用性的任何暗示性的担保,本公司概不负责。敬请联系您的销售代表,获得书面质保文件。
Production specifications are subject to normal manufacturing tolerances and may be changed without notice. Slight variation in colour among different production lots are normal and should be considered in the overall installation plan. Products covered by manufacturer's written warranty only. All other warranties, including without limitation any implied warranties of merchantability or fitness for particular purpose, are hereby disclaimed. Contact your representative for written warranty information.



Carbon Neutral Floors™

www.interface.com.cn

太仓生产基地/Manufacturing Facilities

英特飞中国/Interface China
tel: +86 512 5373 9888

上海/Shanghai

英特飞中国/Interface China
tel: +86 21 6340 3868

北京/Beijing

英特飞中国/Interface China
tel: +86 10 6590 7810

香港/Hong Kong

英特飞中国/Interface China
tel: +852 2802 0838

日本/Japan

英特飞日本/Interface Japan
tel: +81 3 5733 5211

韩国/South Korea

英特飞韩国/Interface South Korea
tel: +82 2 555 1734

东南亚/South East Asia

英特飞亚洲/Interface Asia
tel: +65 6478 1510

澳大利亚/Australia

英特飞澳大利亚/Interface Australia
local toll free: 1800 804 361

印度/India

英特飞印度/Interface India
tel: +91 80 4613 1313

06/2022



Climate change is undeniable. And reversible. Our mission is to prove it. Join the #ClimateTakeBack and help create a climate fit for life.

气候变化不可否认，但可以逆转。我们的任务就是要证明这一点。加入#ClimateTakeBack（气候回归计划），帮助创造一个万物共荣的气候。